



XT Camera System

Seek extraordinary

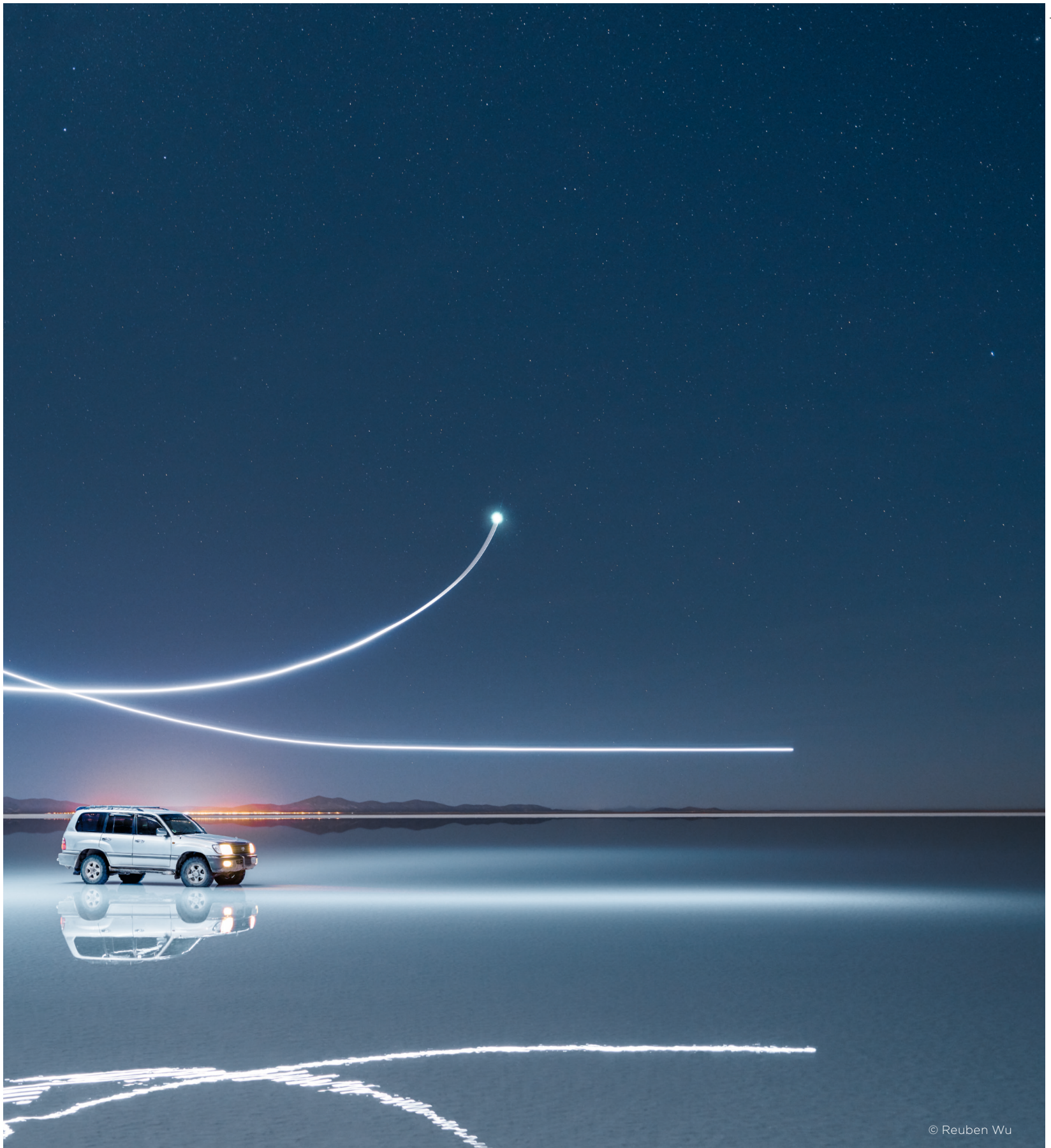
PHASE**ONE**

what the world's best photography is made of



The XT Camera System

Seek extraordinary



© Reuben Wu

Your passion for photography takes you far and wide, to distant and spectacular places. As of this moment, you have the absolute best camera system to bring along: the Phase One XT.

Designed for convenience and engineered for precision, the travel-friendly XT Camera System fits easily into your

lifestyle. It pairs an intuitive interface with the unparalleled technology and image quality for which Phase One is known. The XT offers you total control over the shooting workflow, and absolute freedom to focus on your creative process. As beautiful as it is powerful, the XT pioneers new opportunities for you to seek, capture and share the extraordinary.

In a class of its own

The XT Camera System is developed as the next step in the evolution of the field camera. Phase One was born digital and, by pioneering a fully integrated camera with medium and large format optics, we streamline and re-imagine what a field camera can do. The XT Camera System features complete digital integration and workflow, and a brand new, exclusive shutter technology: the X-Shutter.

Unparalleled image quality

The breathtaking quality of the images from an XT Camera System are sure to impress and inspire others. Phase One sets the standard for image quality in medium format, so your photography will stand out.

Crafted for you

The XT Camera System is designed for convenience and engineered for precision. The exclusive, high-quality finishes of each system are given individual care, resulting in a camera that is desired as much for its beauty as for its image quality.

Travel-friendly design

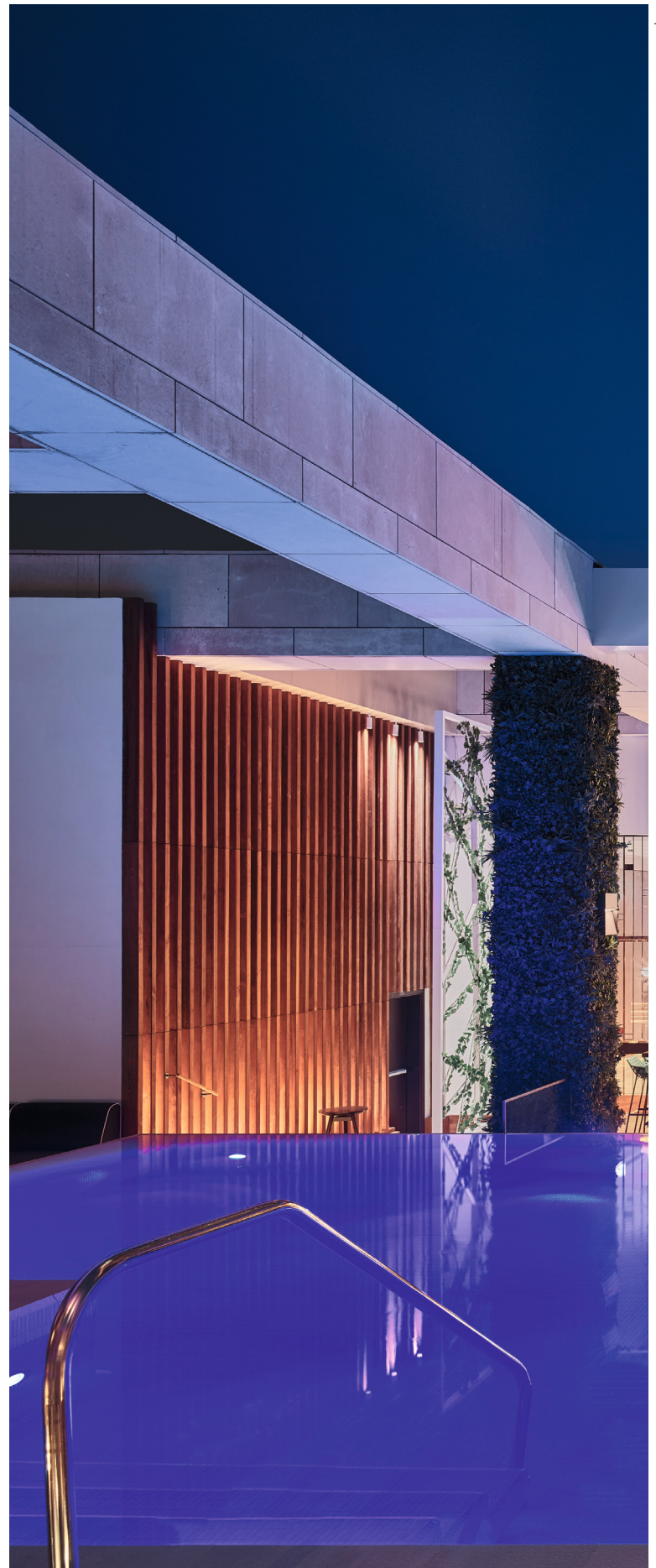
The XT Camera System emphasizes a modular and travel-friendly design that fits easily into your lifestyle. The form and aesthetic underline the system's priorities as a new breed of camera, masterfully designed for portability without sacrificing quality.

Effortless capture

Turning a new page in the history of the field camera, the XT delivers full digital integration and intuitive, easy-to-master operation. Meticulous attention has been given to fine details and usability features, elevating your shooting experience.

Expanding camera system

The XT Camera System is designed to expand and evolve. With the brains of the IQ4 Infinity Platform and the heart of the X-Shutter, the integration and features of the XT support limitless potential for even simpler use. The XT is a camera system that is extraordinary now and is poised to get even better with age.





© Antonio Saba

Shot with [XT IQ4 150MP](#) and
[XT - Rodenstock HR Digaron-W 32mm f/4](#)

Aperture	f/8
Exposure time	3 sec.
ISO	400



"I really wanted to shoot the Bolivian salt flats at sunset. When the sun is setting on those unique polygon shapes the salt flats form on the ground, the shadows would get longer and longer, and the landscape would look different every few seconds."

- Reuben Wu



Landscape photography by Reuben Wu

I think what people often say about my photography is that it's otherworldly, that these landscapes don't appear to be from this planet. But actually, what I'm trying to show is that these are very worldly, earthly images, of places close to us. We've been exploring Mars and we haven't yet seen anything like the extraordinary landscapes we have right here. So what I'm trying to do through my photography is to renew people's perspective of our own planet, to make the familiar appear new and

fresh, so that people look a bit harder at the things around them, appreciate them and take more care of them.

A lot of my photos created with drone lights feature circles. To me, this shape represents harmony, perfection. With this image, I wanted to feature the circle within the landscape of Bolivia's salt flats. Having the light really low on the salt flats created an interesting mood, with the light emanating from the circle and the shadows cast in the salt.



© Reuben Wu

I like the XT because it's so geared towards travel, it fits my workflow on location. It's a lot more integrated than technical cameras, and everything is controlled using one screen. I don't have to think about a separate viewfinder, a cable release and so on. Everything is centralized. Also, it's light. It allows me to scout, hike in difficult areas, set up my composition easily, craft an image and get it exactly right. I end up taking a few amazing photographs, which is way better than taking hundreds of not so amazing ones.



© **Reuben Wu**

Shot with **XT IQ4 150MP** and
XT - Rodenstock HR Digaron-W
32mm f/4

Aperture	f/8
Exposure time	3 sec.
ISO	400

Quality optics

Known for their great resolving power and contrast even at large apertures, the optical design of Rodenstock HR lenses reduces diffraction and color noise, even at the pixel density of the IQ4 150MP, providing further flexibility to the full frame medium format sensor.

With Rodenstock as a strategic partner, the introduction of these exclusive, digitally integrated lenses is only the beginning of the XT Camera System lens range.

 **RODENSTOCK**



XT - Rodenstock HR Digaron-W 32mm f/4

is a high-quality wide-angle lens with a large image circle and almost no distortion, suitable for significant X and Y shift.

XT - Rodenstock HR Digaron-S 23mm f/5.6

is simply the best super wide medium format lens on the market.



XT - Rodenstock HR
Digaron-W 70mm f/5.6

is a normal focal length lens with impeccable
image quality and a large image circle.



Landscape photography by Paul Reiffer

Paul's successful career as a photographer is built on sweeping landscapes and busy cityscapes. His work has been exhibited all around the world, from the Royal Albert Hall and Houses of Parliament in London, to the largest screens in Times Square, and even a sandbank in the middle of the Indian Ocean.



© Paul Reiffer

Shot with XT IQ4 150MP and
XT - Rodenstock HR Digaron-W
32mm f/4

Aperture	f/8
Exposure time	1/125
Frame averaged	2 min.
ISO	50



© Paul Reiffer



"I use Phase One for my landscape work, and I'm amazed by the image quality every time I download the contents of my memory card".

- Paul Reiffer

Integrated Movements

The XT Camera System takes full advantage of the Rodenstock optics with 24mm of shift on both X and Y axes. These movements allow you to correct for perspective distortion or create panoramic and stitched images quickly and precisely. The shift position of the camera is integrated into the image file providing immediate feedback for later use.

Additionally, the design of the XT allows you to quickly rotate the camera between portrait and landscape orientation while remaining securely mounted to a tripod via an integrated Arca Swiss-type mount, further expanding the integrated workflow.



The X-Shutter

At the heart of the XT - Rodenstock HR lenses is the X-Shutter. The X-Shutter is an intelligently integrated and electronically controlled shutter, born out of Phase One's industrial applications and experience. The X-Shutter is purpose-built for the XT Camera System to allow for finer control in a smaller form factor. Powered by the IQ4, the X-Shutter shares in the ambition of the Infinity Platform for future growth and flexibility.

IQ4 Infinity Platform

At the core of the XT Camera System is the IQ4, built on the powerful and flexible Infinity Platform. The Infinity Platform dynamically expands and adapts to market demands and technological changes. It provides you with a steady stream of new features, functions, compatibility and improved usability. The Infinity Platform enables the same IQ4 to seamlessly switch from the professional power and functionality of the XF, to the elegance and simplicity of the XT, in an instant.



© Reuben Wu

Capture One Inside

We integrated the cutting-edge RAW editing core of the Capture One software directly into your camera to reflect your personal aesthetic in the RAW file itself. Thanks to the ample processing power of the IQ4, with Capture One Inside you get greater control over your RAW capture when you are away from your computer and immersed in your subject.



© Paul Reiffer



Digital back options

	IQ4 150MP	IQ4 150MP Achromatic	IQ4 100MP Trichromatic
Resolution	151 megapixels	151 megapixels	101 megapixels
Long exposure	60 minutes	60 minutes	60 minutes
16 bit Opticolor+	Yes	Yes	Yes
Dynamic range	15 F-stops*	15 F-stops*	15 F-stops
Sensitivity (ISO)	50 - 25600	200 - 102400	35 - 12800
Sensor type	CMOS BSI	CMOS BSI	CMOS
Sensor size	53.4 x 40	53.4 x 40	53.4 x 40
Active pixels	14204 x 10652	14204 x 10652	11608 x 8708
Pixel size (micron)	3.76 x 3.76	3.76 x 3.76	4.6 x 4.6
Output image dim. 300 DPI	120.26 x 90.19 cm	120.26 x 90.19 cm	98.3 x 73.2 cm
Output image dim. 600 DPI	60.13 x 45.09 cm	60.13 x 45.09 cm	49.1 x 36.9 cm
Mount option	XT/XF	XT/XF	XT/XF
3.2" multi touch display	Yes	Yes	Yes
XT Powershare	Yes	Yes	Yes
Electronic Shutter (ES)	Yes	Yes	Yes
USB-C	Yes	Yes	Yes
Gigabit Ethernet	Yes	Yes	Yes
Wi-Fi 802.11	Yes	Yes	Yes
HDMI	Yes	Yes	Yes
File formats	IIQ L 16 Extended, IIQ L 16, IIQ L, IIQ S, IIQ S 14+	IIQ L 16 Extended, IIQ L 16, IIQ L, IIQ S, IIQ S 14+	IIQ L 16, IIQ L, IIQ S
Sensor+	Yes	Yes	No
Captures per second			
X - Shutter	2 fps	2 fps	1.2 fps

*IIQ L 16 Extended file format

Camera controls & interface



XT functions

Shutter release	Dual-action with customizable half press
Horizontal dial	12mm shift to the left 12mm shift to the right
Vertical dial	12mm shift up 12mm shift down

Lens Interface

Electrical	14-pin X-Shutter interface
Physical mount	Cambo WDS compatible
Mount lock	Two action safety release

Rotatable tripod foot

Quick lock rotation	Easily switch from landscape to portrait without detaching from tripod
Detachable foot	Easy detach foot for handheld shooting convenience
Tripod shoe	Arca Swiss-type rail

Lenses & X-Shutter



XT - Rodenstock lenses

	XT HR 70mm	XT HR 32mm	XT HR 23mm
Aperture range	5.6 - 22	4 - 22	5.6 - 32
Filter diameter	58mm	86mm	72mm
Image circle	100mm	90mm	70mm

X - Shutter

Shutter type	Electro magnetical
Shutter speed	1/1000 - 60min
Durability	Tested to 500.000+ captures
Shutter blades	Carbon fiber
Helical focus drive	Ultra fine manual focus
Focusing clamp	Optional reposition or detach with 2 screws
Aperture module	5 blades (curved blades)

Imaging software



Software

RAW converter	Capture One Pro 12.1.1 or newer
XT metadata	Recognizes lens name, time, aperture and shift
XT Camera control	Capture, live view and XT Camera setup
XT Lens corrections	Automatic lens correction for XT - Rodenstock lenses
Tethered support	Yes
Workflow options	Sessions and catalogues
Imaging tools	25+
Local adjustments	Adjustment & clone layers
Batch output	Yes, using recipes and multiple destinations
Output formats	8 & 16 bit TIFF-RGB, TIFF-CMYK, JPEG incl. XR/2000/QuickProof tm, DNG, PNG, PSD

The XT Camera System

Seek extraordinary



© Phase One 2019. All rights reserved. September 2019, content is subject to change without notice. P/N: 85072000

For more information, please visit
www.phaseone.com/xt

Follow us on:
Facebook @PhaseOnePhoto
Instagram @PhaseOnePhoto
Twitter @PhaseOnePhoto
YouTube @PhaseOneDK

PHASEONE

what the world's best photography is made of