

# Capture One 12

by Phase One

## Reviewer's Guide



**Capture One**  
made by PHASEONE



## Table of contents

- 1 About Capture One
- 2 Getting started
- 3 Recommendations for testing Capture One
- 4 New tools & features for Capture One 12
- 5 Updates & improvements for Capture One 12
- 6 References & resources
- 7 About Phase One

# Capture One 12

The professionals' choice for tethered workflow, precision editing, and optimal RAW conversion



# About Capture One

Capture One continues to lead the way in RAW conversion and image editing. Support for more than 500 cameras and dedication to the creative freedom of its customers guide Capture One's workflow, its exceptional color handling, and precision editing tools. It is designed to help photographers achieve their creative visions through a smooth, efficient process, and is distinguished as the professional's choice in imaging software.

Capture One 12 introduces an updated image-processing engine, a suite of powerful new features, improvements upon existing features, and continues to extend its market-leading performance. The highly responsive tools give you the power to create stunning images from your RAW files, in a time-saving workflow that can be customized to fit your needs.

Capture One 12 is made by Phase One, the world's leading manufacturer of high-end digital camera systems, in collaboration with the world's leading professional photographers.

[www.captureone.com](http://www.captureone.com)

## Key Differentiators

- Highest quality RAW file conversion with a comprehensive range of professional image editing tools
- Accelerated workflow + multiple ways to Select, Cull, Edit and Export
- Choice of file management system by Catalogs or Sessions
- Superior tethered capture support
- Customizable workspaces and shortcuts

## Image Quality

Known and respected for its ability to generate extremely high-quality conversions from RAW files, with Capture One the utmost care is taken in the preparation and support for new camera models, resulting in color and noise profiles that provide exemplary results out of the box.

Supporting a camera in Capture One is a detailed process that does not depend on just a few supplied RAW files; rather, the development team tests the software in various photographic scenarios with the specific camera in hand. At the end of the process, the team has produced a great deal of captures for each camera to ensure image quality satisfaction from any of the many supported models.

# Getting started

Download the Capture One installer for Mac or Windows here:

[www.phaseone.com/Download](http://www.phaseone.com/Download)

You can download the Release Notes for the current version [here](#), where you'll find information about system requirements, camera and lens support, etc.

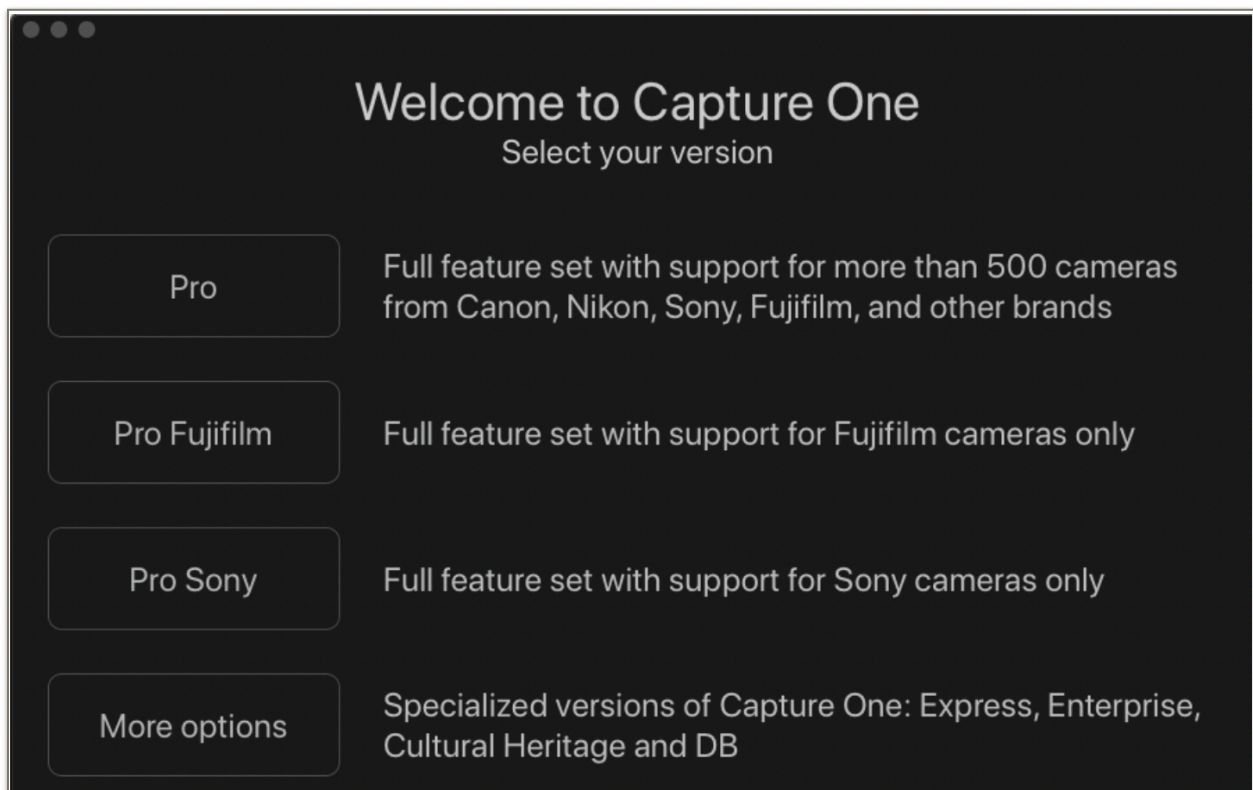
You must create a Phase One profile or log into an existing one to download Capture One.

Each license key allows installations on up to three computers.

For instant guidance, watch the Getting Started series of Capture One 12:

- [Interface explained](#)
- [Creating a catalog](#)
- [Essential adjustments](#)
- [Exporting images](#)

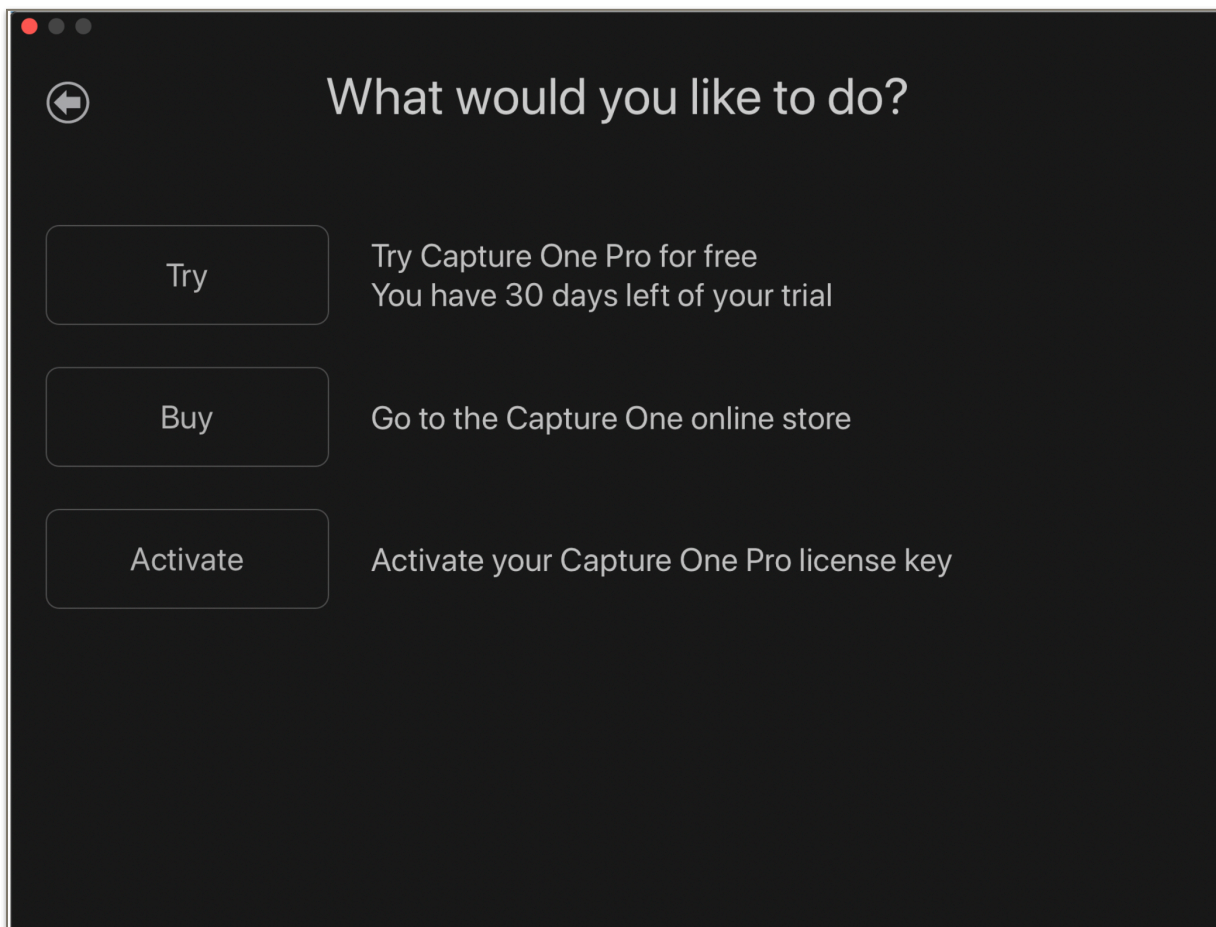
When launching Capture One for the first time, the following splash screen appears:





- **Capture One Pro** – Full featured solution with full camera support  
- Please choose this option for your review. Your license key is valid for the full Pro version.
- Capture One Pro Fujifilm – Full featured solution for Fujifilm cameras only
- Capture One Pro Sony – Full featured solution for Sony cameras only
- More options – Specialized versions of Capture One: Express, Enterprise, Cultural Heritage and DB for Phase One or Mamiya Leaf owners.

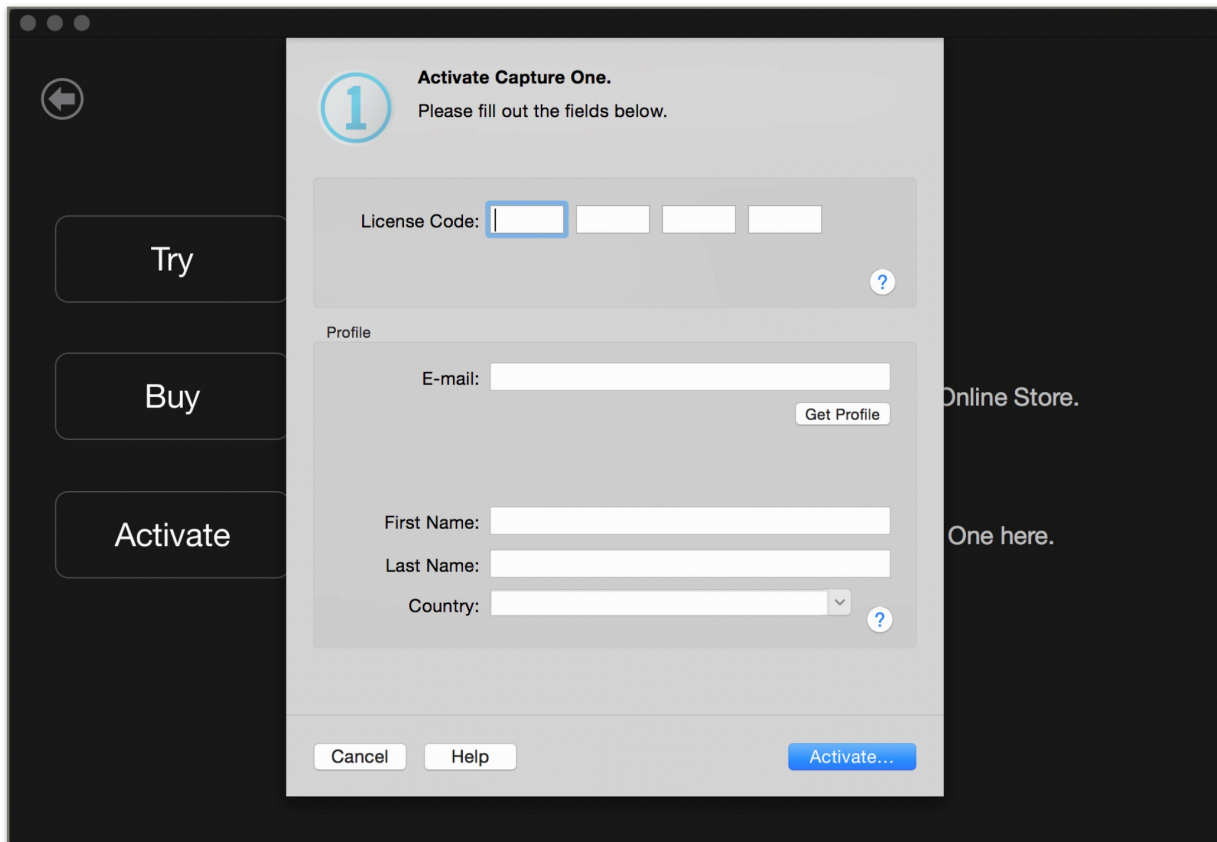
The next screen will allow you to register the application with the license key you have received for this evaluation. Please ensure that you are connected to the Internet. Then click '**Activate**' to activate your copy of Capture One.



On the next screen enter your license code and email address, and click **'Get Profile'**. The rest of the fields will be automatically filled in after entering your password.

Otherwise, fill in the remaining fields.

Click **'Activate'** and your copy of Capture One is ready to use.



# Recommendations for testing Capture One

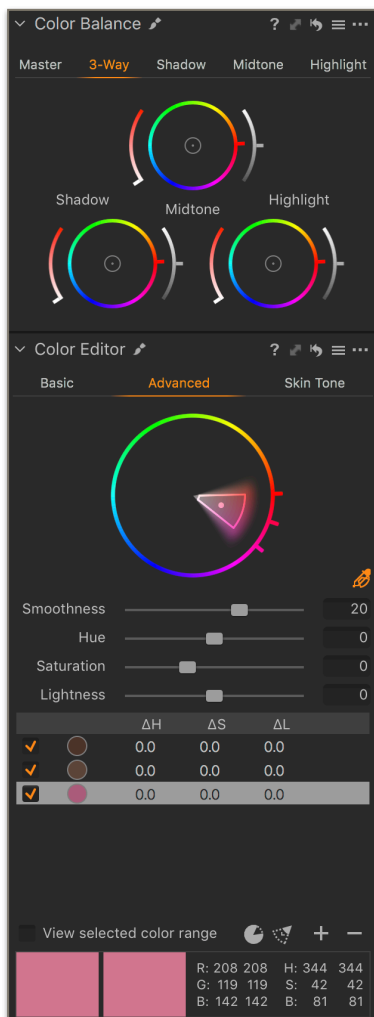
Many aspects of the software are unique to Capture One, and are unavailable with other RAW processing and image editing applications such as Lightroom. When reviewing Capture One, please make special note of these key differentiators:

## Performance

You will find navigating Capture One to be fast and smooth when using a reasonable system. Try importing, browsing, zooming, adjusting etc. Images build rapidly to 100% view, which is also cached when performing tasks such as side-by-side comparisons. These qualities have been further improved in Capture One Pro 12, and in addition, the Sliders now provide a smoother and faster response, which is particularly important with precision adjustments.

\*Capture One is capable of using all computer resources. i.e. processor speed / cores, RAM, and GPU.

## Image adjustments

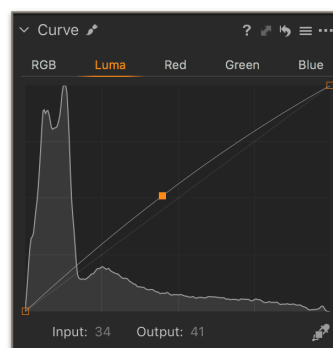


Tools such as the **Color Editor** and **Color Balance** tool are unique to Capture One, allowing precise adjustment of individual colors and infinite possibilities for color grading an image.

Color selections also can be transformed into Layer Masks for even more possibilities for precise and controlled adjustments.

The Contrast slider specifically adjusts contrast, leaving Saturation largely untouched: much like a **Luma Curve**, but with the simplicity of a slider.

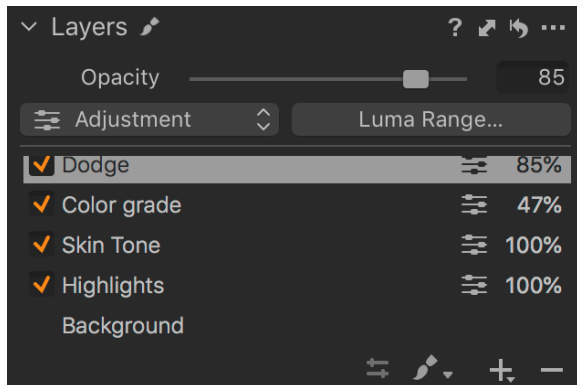
For even more control, the Luma option in the Curves tool simply does what the Contrast slider does, but with greater flexibility.





## Layered workflow

Adjustments can be placed on Layers with a similar but simplified principle to Photoshop, where each layer can be masked to allow targeted adjustments in areas of the image. The opacity of each layer can be varied independently of others and adjusted further with options for Feathering and Refining the mask.



Masks are created with Brushes, the Gradient tools, or transformed from Color Selections in the **Advanced Color Editor**.

With varying levels of Opacity and Flow available, complex masks can be created quickly and easily, making it particularly suitable for local-exposure adjustments like Dodging & Burning.

With the ability to place the Color Balance tool on a layer, a final Color “grade” can be decided upon without having to apply it to the image. As such, precise adjustments are easily achieved, especially when coupled with other tools such as the Color Editor and Curves.

## Interface, customization, workflow

As previously mentioned, one of Capture One’s differentiators is the ability to heavily customize the interface and shortcuts for unique needs.

The interface is not ‘modal’. There are no Develop / Library modules as found in Lightroom, so you can simply move through adjustment or management tasks instantly.

While there are many workflow practices similar to other applications, Capture One’s roots began in high volume, fast-paced environments, so the ability to run multiple process actions simultaneously with automatic creation of destination folders is a feature to note, and one that is much welcomed by professional customers.

## Tethered capture

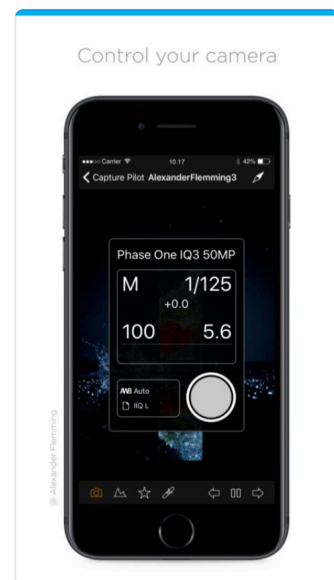
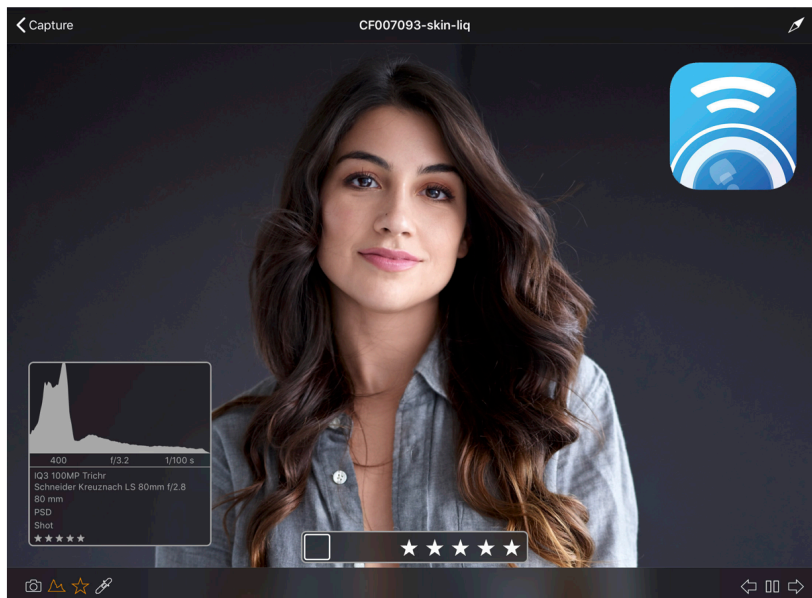
Capture One's tethered performance and control is unmatched by any other application available, with the amount of time from capture to review is nearly imperceptible on a modern system.

Capture One's **Camera Tool** and **Camera Settings Tool** allow complete interactivity with the attached camera: for setting parameters, triggering capture and live-view options. The **Camera Focus Tool** allows the user to 'nudge' focus in critical situations without having to disturb the camera.

Video: [Shooting Tethered - Introduction](#)

[Capture Pilot](#) for iOS Devices and Web, allows remote wireless viewing of Capture One, and also camera control. It is designed for collaboration on set between Photographer, Stylist, Make Up Artist, Assistant and Client.

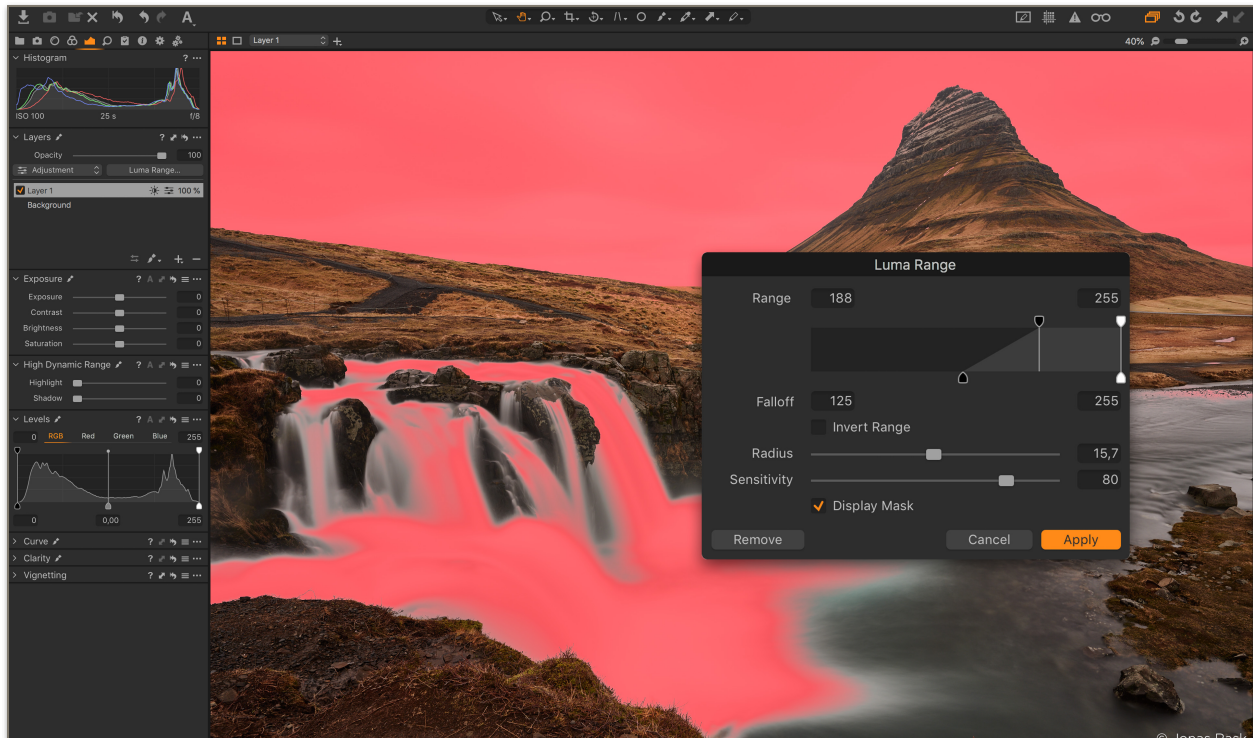
Video tutorial: [Shooting tethered - Capture Pilot](#)



# New tools & features for Capture One 12

## Luminosity masking - Luma Range tool

Create masks from specific luminosity ranges with the Luma Range tool.



The **Luma Range** tool allows users to quickly create masks based on the brightness of pixels in an image, and is the most powerful luminance masking tool of its kind.

Luminosity masking opens up an incredible range of editing possibilities, from selective noise reduction to precise color grading. It enables users to do things such as apply shadow recovery to only the *darkest* shadows, or add clarity to the lightest parts of the image, and much more.

In addition, the masks created with the tool can easily be tweaked and modified at any point in the workflow, and unlike a brush-made mask, Luma Range tool adjustments can be applied from one image to another, and the effect will be based on the luminance of each image instead of a brush stroke.

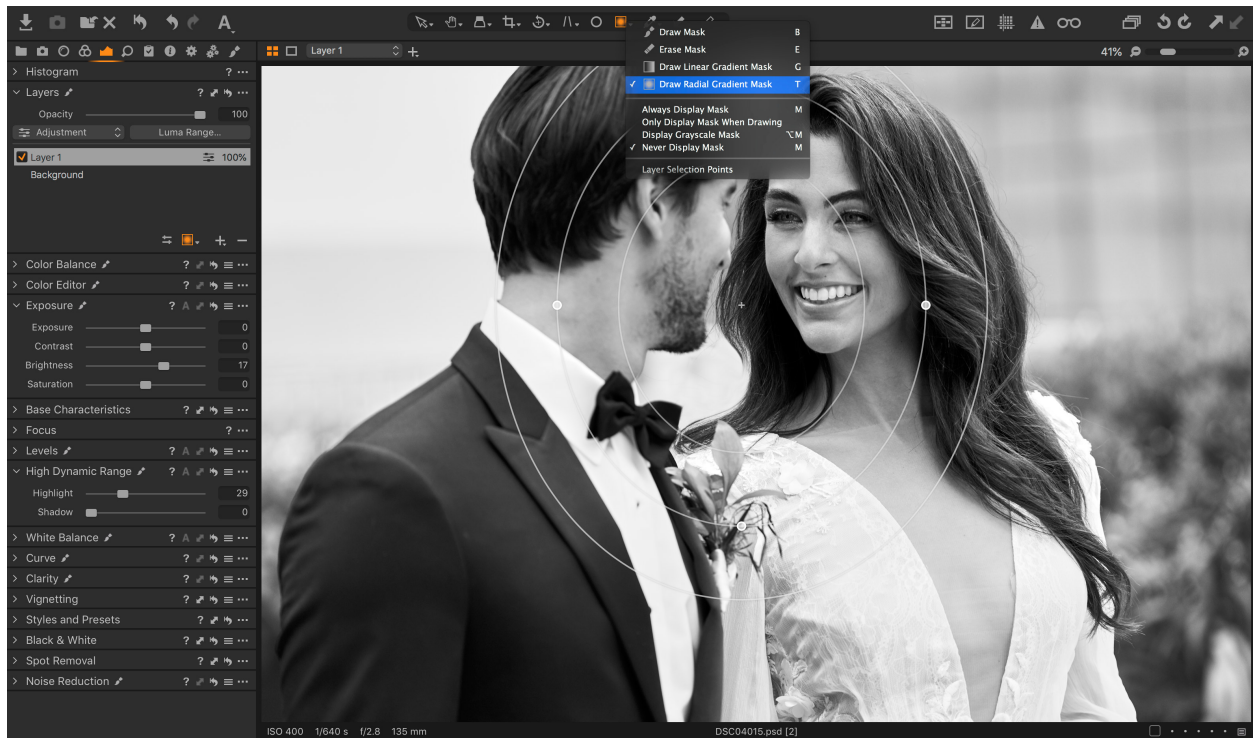
## Keyboard Shortcut Search

Capture One is known for its ability to custom-assign and custom-configure virtually every task to a keyboard shortcut. Users can now search the extensive library of keyboard shortcuts in Capture One by the specific menu command, or by the assigned keyboard shortcut, making it easy to find and manage shortcuts and get an even better and personalized workflow.



## Radial Masks

Create and transform round masks with ease.



The new **Radial Gradient** mask tool enables quick, flexible radial masks, useful for vignette and other adjustments with a desired falloff effect. The radial masks can easily be adjusted in the size, shape, and symmetry for complete control.

## Plug-ins

Workflow beyond Capture One with plug-ins

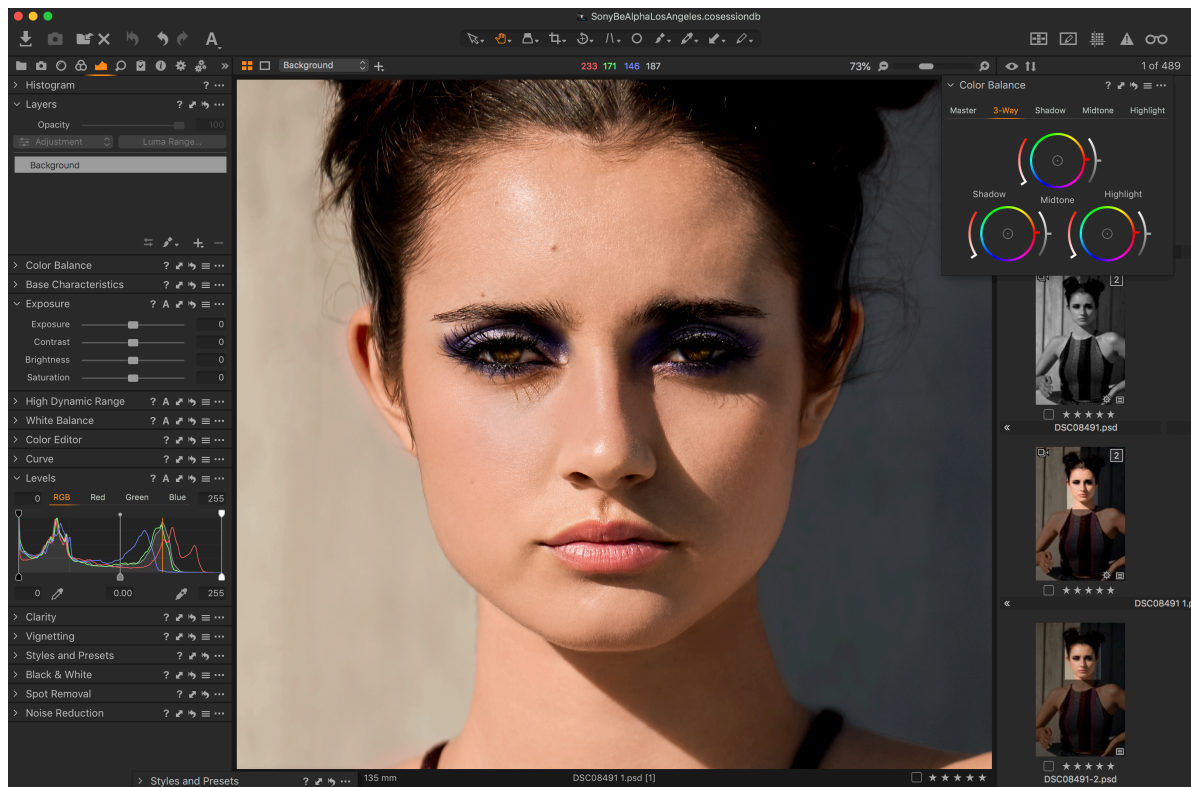
To address the needs of photographers and creatives looking to share, edit and collaborate on their images, the Capture One plug-in ecosystem opens up for powerful third-party extensions. [Follow here](#) to see what plug-ins are available for Capture One, and send in your request for more plug-ins.

# Updates & improvements for Capture One 12

The Capture One team is dedicated to providing its users with long-term support that extends beyond creating new features and new camera profiles. It means constantly evaluating all aspects of the software and improving upon features that already exist and even those that are much loved.

## Updated look & interface

Whilst still immediately recognizable to any current user, Capture One 12 features a cleaner, more easily-navigated appearance and menu layout. The new menu structure gives a more logical overview, and an increased default font size provides a better viewing experience. The look and usability is welcoming for new users while being familiar and fully customizable for power-users.



## Powerful, refined interface

Capture One 12 introduces a refined interface, designed to make Capture One easier to use during long editing sessions, and to make discovery, experimentation, and customizability easier than ever. New iconography better conveys tool functionality, and the new slider design, the spacing of the tools, and font size increase improve both the look and the usability of the program.

## Revamped menu

Every menu item in Capture One 12 has been evaluated, categorized, and organized according to its logical function, and grouped along with associated tasks, which makes it easier to find the desired controls and settings, and brings the Mac and Windows menu options into alignment.

## Gradient Masks

**Create and transform Linear Gradient Masks.**

Capture One 12 takes gradient masks to the next level, allowing for editable, moveable, rotatable—and best of all—asymmetric gradient masks. Using a brand-new Parametric Masking Engine, Capture One allows for adjustments in the size, shape, and symmetry of the masks with simple mouse clicks and key presses, truly redefining what is possible with a linear gradient. Rotate, feather, and adjust a mask with a precision never before possible.

## Improved masks

**Greater editing power with Layers**

With Luminosity, Radial Gradient, and Linear Gradient masks, Capture One adds even more creative control when using Layers in image editing.

Video tutorial: [Luminosity masking](#)

Video tutorial: [Radial and linear gradients](#)

## Intelligent adjustments copying

When copying adjustments between images, Capture One will automatically detect changes for a quick workflow. Image specific adjustments like composition or spot removal are ignored by default, but can be manually included if needed.

## Fujifilm Film Simulation

Fujifilm X-Series and GFX-series cameras feature Film Simulations, which are in-camera tonal adjustments that faithfully reproduce the color and tonality of classic Fujifilm photographic films. Sixteen Film Simulations are available, ranging from color stocks like *Provia* and *Velvia* to black and white film like *Acros*.

Thanks to the collaboration between Capture One and Fujifilm, photographer's using Fujifilm's renowned X-Series and GFX-series cameras will be able to edit photos complete with Fujifilm Film Simulations. These in-camera settings have been faithfully reproduced in Capture One, to provide an identical experience when working with files, resulting in images that appear the same as if the Film Simulation picture profiles were applied in-camera.



## References & resources

We will be happy to arrange for you to speak with a photographer who is currently working with Capture One 12 or with a Capture One expert for more detailed information.

### More resources

Training and support options:

- Capture One Learning Hub: [learn.phaseone.com/capture-one](https://learn.phaseone.com/capture-one)
- Capture One Blog: [blog.phaseone.com](https://blog.phaseone.com)
- Capture One YouTube channel: [www.youtube.com/CaptureOneProDK](https://www.youtube.com/CaptureOneProDK)
- Capture One Help Site: [help.phaseone.com](https://help.phaseone.com)
- Capture One training is available on educational sites such as: Creative Live, Lynda.com, Video2Brain, jointhebreed.com, rggedu.com, and others
- Workshops: Many Phase One partners offer workshops and support for Capture One. To find out more, check in with the partner nearest you: [www.phaseone.com/partners](https://www.phaseone.com/partners)

# About Phase One and Capture One

Capture One is the award-winning professional choice in image editing software. With native support for more than 500 camera models, Capture One software offers fast and powerful RAW conversion, image editing and asset management. Capture One features a highly responsive processing engine, unmatched color handling, precision-editing tools, and seamless tethered support.

Capture One is developed by Phase One A/S, the world's leading manufacturer of medium format digital photography systems and imaging solutions for professional photographers, and cultural heritage and industrial solutions. Established in 1993, Phase One has pioneered the field of digital camera systems and imaging software, including multiple breakthroughs - from the world's first 100MP camera systems to advanced imaging workflows in Capture One.

By controlling all aspects of the medium format camera system supply chain, Phase One is uniquely positioned to help photographers and imaging experts everywhere stand out from the competition and realize their creative visions without compromise.

Based in Copenhagen, Denmark, and with offices in New York, Tokyo, Cologne, Shanghai and Tel Aviv, Phase One is committed to delivering an unmatched level of service and support to every customer through this expert team of global partners.

Phase One and Capture One are registered trademarks of Phase One A/S. All other brand or product names are trademarks or registered trademarks of their respective holders.

Learn more here:

Capture One at: [www.captureone.com](http://www.captureone.com)

Phase One at: [www.phaseone.com](http://www.phaseone.com)

Facebook at: [www.facebook.com/CaptureOnePro](https://www.facebook.com/CaptureOnePro)

Instagram at: [www.instagram.com/CaptureOnePro](https://www.instagram.com/CaptureOnePro)

YouTube at: [www.youtube.com/CaptureOneProDK](https://www.youtube.com/CaptureOneProDK)

LinkedIn at: [www.linkedin.com/company/phase-one](https://www.linkedin.com/company/phase-one)

Global Public Relations Manager, Nadia Julie Froberg: [njf@phaseone.com](mailto:njf@phaseone.com)